

Glaze III

LIBS ELLIOTT



When Sparks Fly Quilt designed by: **Libs Elliott**
Quilt Size: **68" x 68"** • Skill Level: **Intermediate**

When Sparks Fly Quilt

Introducing Andover Fabrics new collection: **GLAZE III** by Libs Elliott

Quilt designed by Libs Elliott

Quilt finishes 68" x 68"

24 Flying Geese Blocks: 6" x 12"

1 Center Star Block: 24" x 24"

Subtle colors with a feel of suede are the perfect palette for this wall quilt. The fresh design might be spot-on for the males in your life. Strip-piecing and other quick techniques make easy work of the various components.

Cutting Directions

Note: Read assembly directions before cutting patches.

All measurements are cut sizes and include ¼" seam allowances. A fat ¼ is an 18" x 20"-22" cut. Sash measurements include extra length for insurance. WOF designates the width of fabric from selvedge (approximately 42" wide).

Fabric 1

Cut (1) square 13¼", cut in half diagonally twice to make 4 quarter-square triangles for Flying Geese

Cut (12) strips 2" x 12½" for striped units

Fabric 2

Cut (1) square 13¼", cut in half diagonally twice to make 4 quarter-square triangles

Cut (8) strips 2" x 12½" for striped units

Fabric 3

Cut (1) square 12½" for center star

Fabrics 4, 5 From each:

Cut (1) square 13¼", cut in half diagonally twice to make 4 quarter-square triangles

Fabric 6

Cut (2) squares 9¾", cut in half diagonally to make 4 half-square triangles

Fabrics 7, 8 From each:

Cut (4) sashes 6½" x 32" (measurement is extra long for ease of construction)

Cut (2) squares 6¾", cut in half diagonally to make 4 half-square triangles for Star Block

Fabrics 9, 15 From each:

Cut (1) square 13¼", cut in half diagonally twice to make 4 quarter-square triangles

Cut (8) strips 2" x 12½" for striped units

Fabric 10

Cut (8) strips 2" x 12½" for striped units

Cut (4) squares 6¾", cut in half diagonally to make 8 half-square triangles

Making the Quilt

When making the blocks, refer to these labels and the list of fabrics on the last page of the pattern.

1 830-L8	2 830-L6	3 830-L7	4 830-B8
5 830-B9	6 830-B10	7 830-T7	8 830-T6
9 830-L9	10 830-L2	11 830-L4	12 830-L3
13 830-N	14 830-N2	15 830-N1	16 830-N3
17 830-L5	18 830-C5	19 830-L	20 830-C3
21 830-C4	22 830-L1	23 830-C	24 830-C1
25 830-C2	26 830-K		

Fabric Requirements	Yardage	Fabrics
2 Dark Blue set	1 yard each	7, 8
4 Medium set	½ yard each	1, 2, 9, 15
4 Tans set	¾ yard each	10, 11, 12, 13
15 Fat ¼ set	fat ¼ each	3, 4, 5, 6, 14, 16, 17, 18, 19, 20, 21, 23, 24, 25
Fabric 26 set (includes binding)	¾ yard	
Fabric 22 (backing)	4½ yards	

Fabric 11

Cut (4) strips 2" x 12½" for striped units

Cut (4) squares 6¾", cut in half diagonally to make 8 half-square triangles

Fabrics 12, 13 From each:

Cut (8) strips 2" x 12½" for striped units

Cut (4) squares 6¾", cut in half diagonally to make 8 half-square triangles

Fabric 14

Cut (4) strips 2" x 12½" for striped units

Fabric 16

Cut (4) squares 6¾", cut in half diagonally to make 8 half-square triangles

Fabrics 17, 18, 19 20, 21, 23, 24 From each:

Cut (8) strips 2" x 12½" for striped units

Fabric 25

Cut (4) strips 2" x 12½" for striped units

Fabric 26 (includes binding)

Cut (4) squares 6¾", cut in half diagonally to make 8 half-square triangles

Cut (8) strips 2½" x WOF for binding

Backing (22) Cut (2) lengths 39" x 78", pieced to fit quilt top with overlap on all sides

When Sparks Fly Quilt

Making the Quilt

- Star Block** The block uses pieced squares in the corners. Referring to Diagram 1, join Fabric 7 and Fabric 8 triangles to make 4 pieced squares (HST). Set aside.
- Star Flying Geese** The flying geese will be easier to piece if you first mark the sewing lines on the wrong side of the half-square and quarter-square triangle patches. Sew Fabric 26 triangles to the short sides of a Fabric 15 triangle, matching sewing lines (Diagram 2). The unit should measure $6\frac{1}{2}'' \times 12\frac{1}{2}''$. Make 4 Star Flying Geese like this.
- Join 4 HST, 4 Star Flying Geese, and the Fabric 3 square to make the Star Block (Diagram 3). Be sure to rotate the patches as shown to make the star design. Set aside.
- Flying Geese Units** Referring to Step 2, make 4 Flying Geese in each of the 5 fabric combinations shown in Diagram 4. The Flying Geese should measure $6\frac{1}{2}'' \times 12\frac{1}{2}''$. Join 5 Flying Geese in the order shown to make a unit. Stitch a Fabric 6 half-square triangle to one end as shown. Make 4 flying Geese Units alike. Set aside.
- Striped Units** Arrange and join the 8 fabric $2'' \times 12\frac{1}{2}''$ strips needed for Unit A in the order shown in Diagram 5. Make 4 alike. Press seam allowances in all 4 pieced squares toward the left. Cut in half diagonally as shown. It is important that you keep the units oriented correctly while cutting. Label the pieced triangles "A" as indicated. Set aside the triangles labeled "not needed" for a future project.
- Referring to Diagram 6, repeat these steps with 8 different strips to make 4 Unit B. Press seam allowances toward the left as you did for Unit 1. Cut the Unit B diagonally in the direction shown. Label the pieced triangles "B". Set aside those not needed.
- Repeat Step 5 to make 4 Unit C (Diagram 7). Press seam allowances toward the left as you did for Units A and B. Cut diagonally in the direction shown. Label "C" and set aside those not needed. Likewise, make 4 Unit D (Diagram 8). Press seam allowances toward the left. Cut diagonally in the direction shown. Label "D" and set aside those not needed. You will have 16 pieced triangles leftover, enough to make several pillows or a small wall quilt.
- Side Units** Referring to the Side Unit diagram, position one of each kind of unit to make a large triangle. Make sure that the seam allowances between Units A and D are pressed so the seam allowances nestle into each other. Join the units together. Make 4 Side Units alike. Staystitch near the long edge to prevent stretching the bias strips.

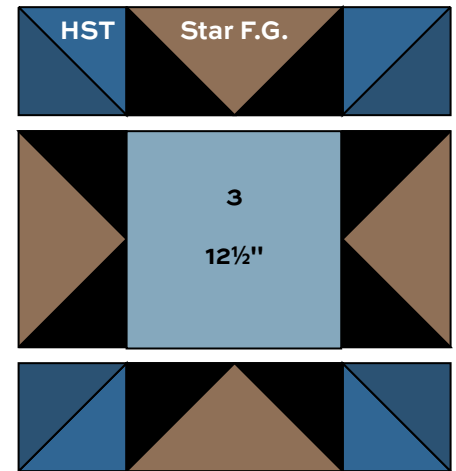
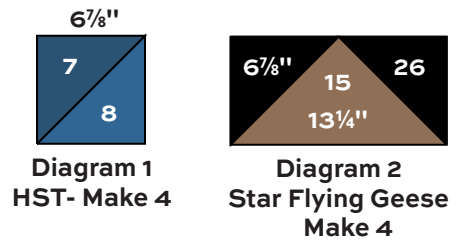


Diagram 3 – Star Block

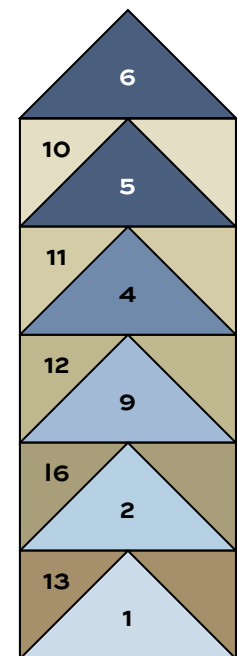


Diagram 4 Flying Geese Unit Make 4

When Sparks Fly Quilt

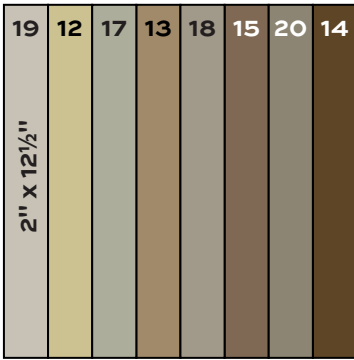
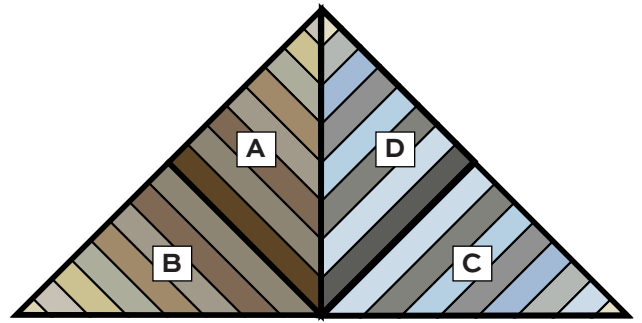
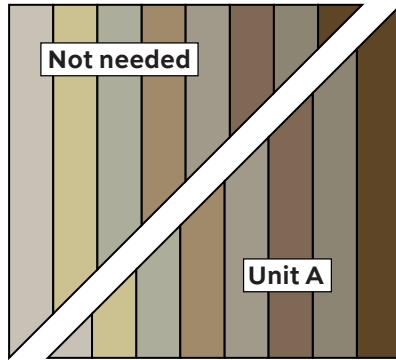


Diagram 5 – Make 4



Side Unit – Make 4

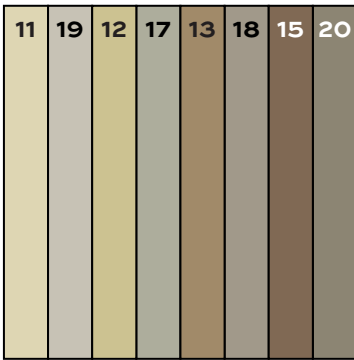


Diagram 6 – Make 4

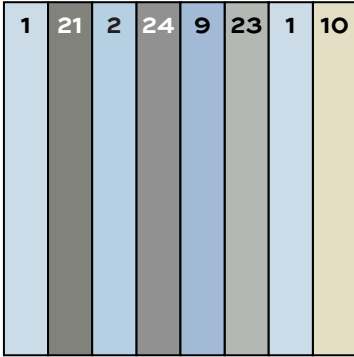
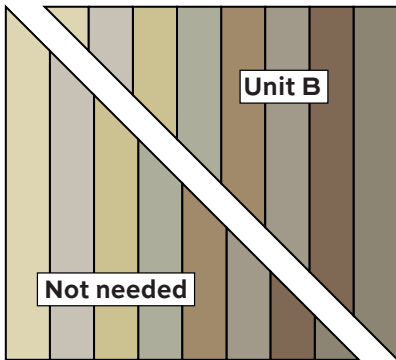


Diagram 7 – Make 4

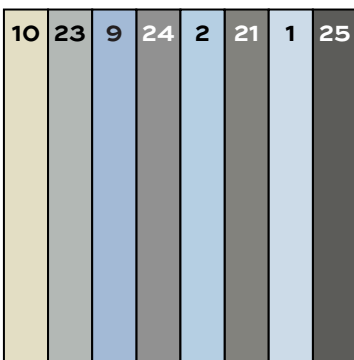
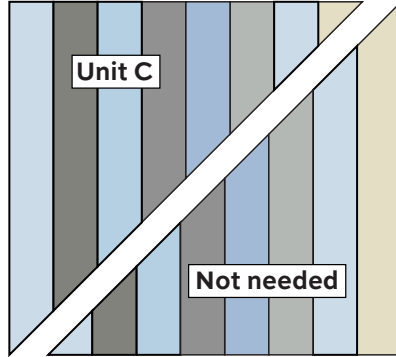
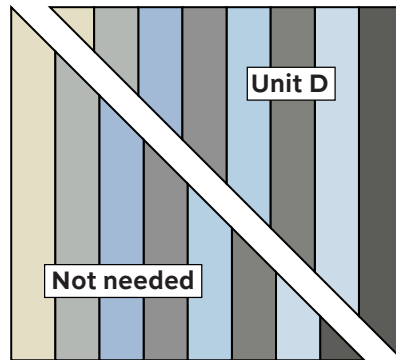


Diagram 8 – Make 4

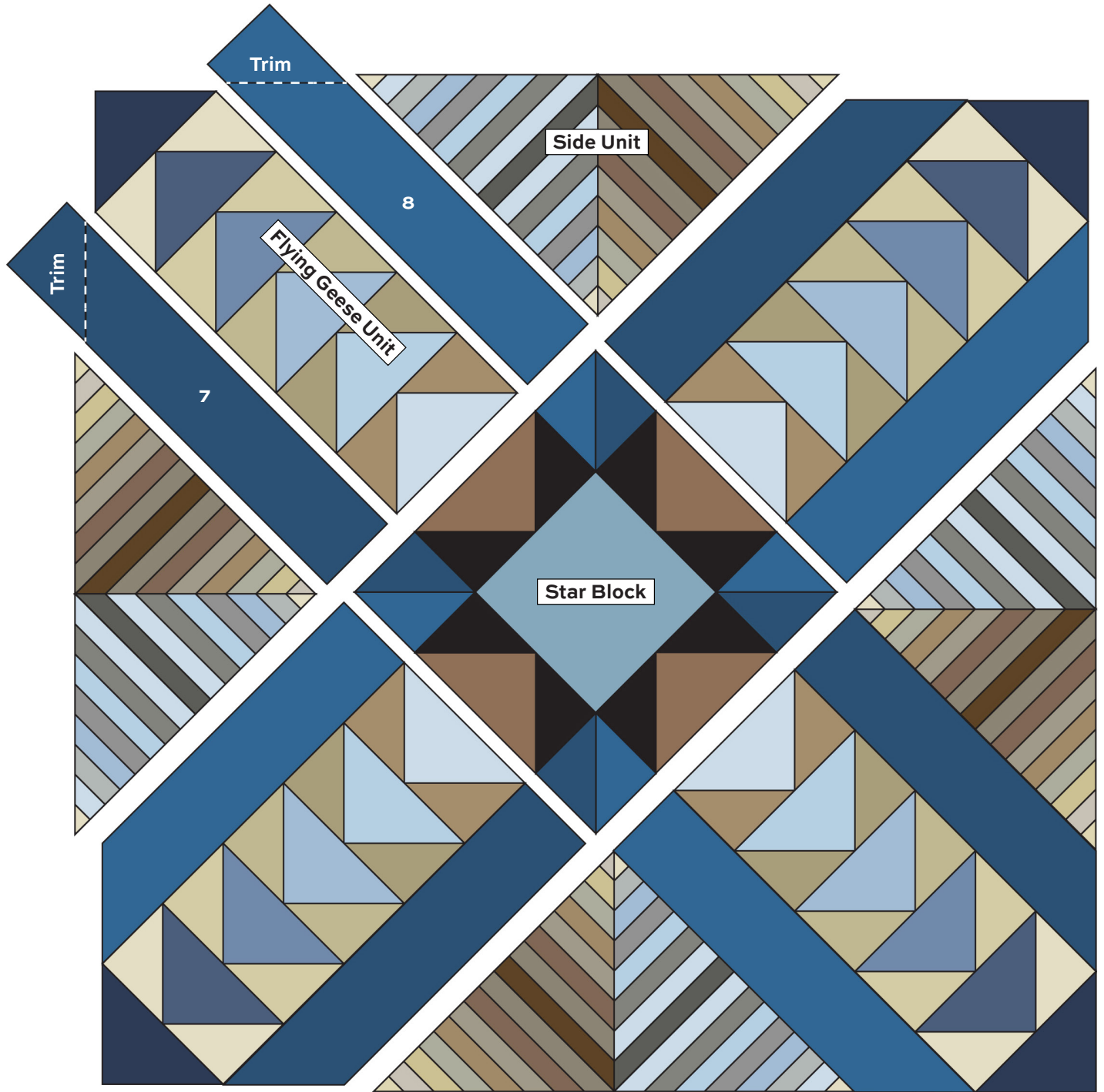


When Sparks Fly Quilt

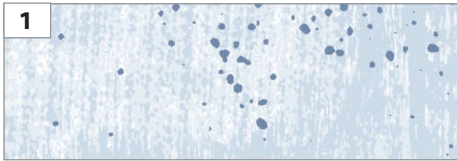
9. Refer to the quilt Assembly. On a flat surface or design board, arrange the Flying Geese Units, Side Units, the Star Block, and Fabric 7 and Fabric 8 sashes as shown. The sash ends will be trimmed later. Join the Star Block, units, and sashes in diagonal rows. Join the rows. Trim the ends of the sashes even with the sides of the quilt.

Finishing the Quilt

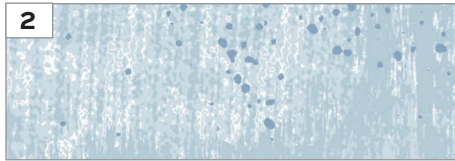
10. Layer the quilt with batting and backing and baste. Quilt in the ditch around sashes and patches. Quilt inside larger patches as you wish. Bind to finish the quilt.



Glaze III LIBS ELLIOTT



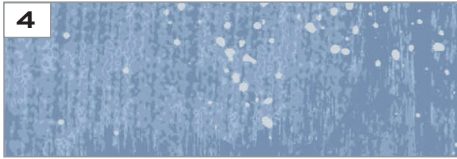
1
830-L8



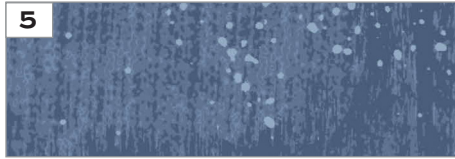
2
830-L6



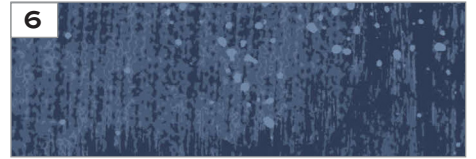
3
830-L7



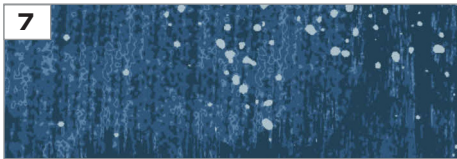
4
830-B8



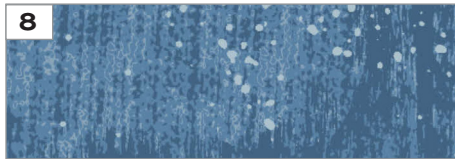
5
830-B9



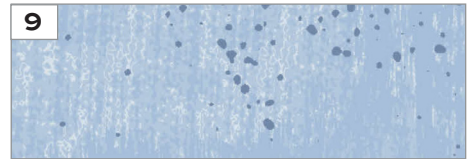
6
830-B10



7
830-T7



8
830-T6



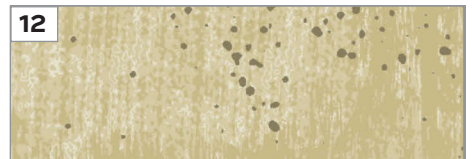
9
830-L9



10
830-L2



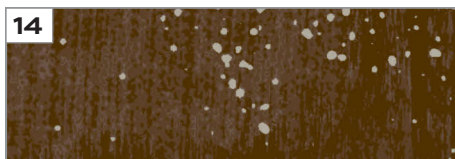
11
830-L4



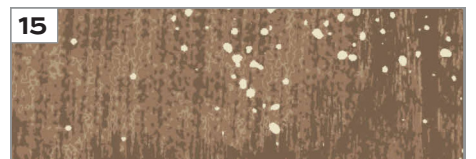
12
830-L3



13
830-N



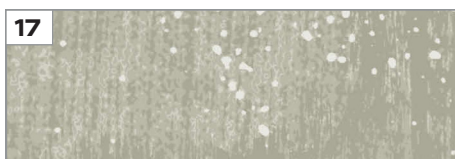
14
830-N2



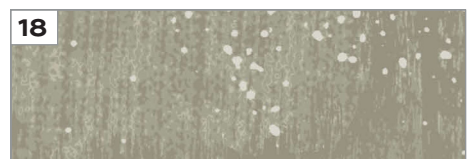
15
830-N1



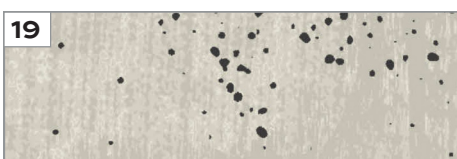
16
830-N3



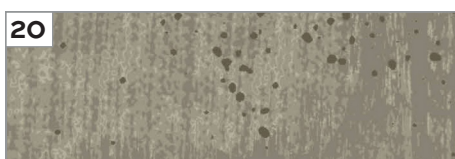
17
830-L5



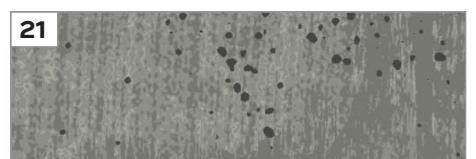
18
830-C5



19
830-L



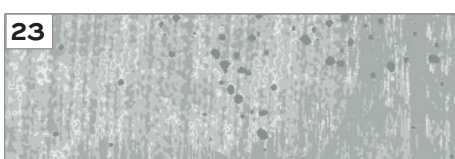
20
830-C3



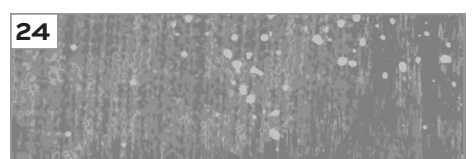
21
830-C4



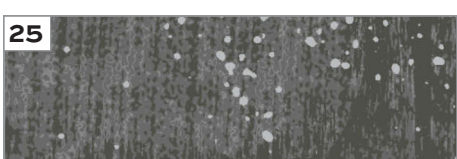
22
830-L1



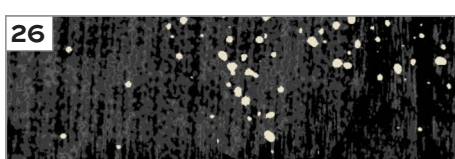
23
830-C



24
830-C1



25
830-C2



26
830-K

All fabrics are used in quilt pattern.
Fabrics shown are 100% of actual size.